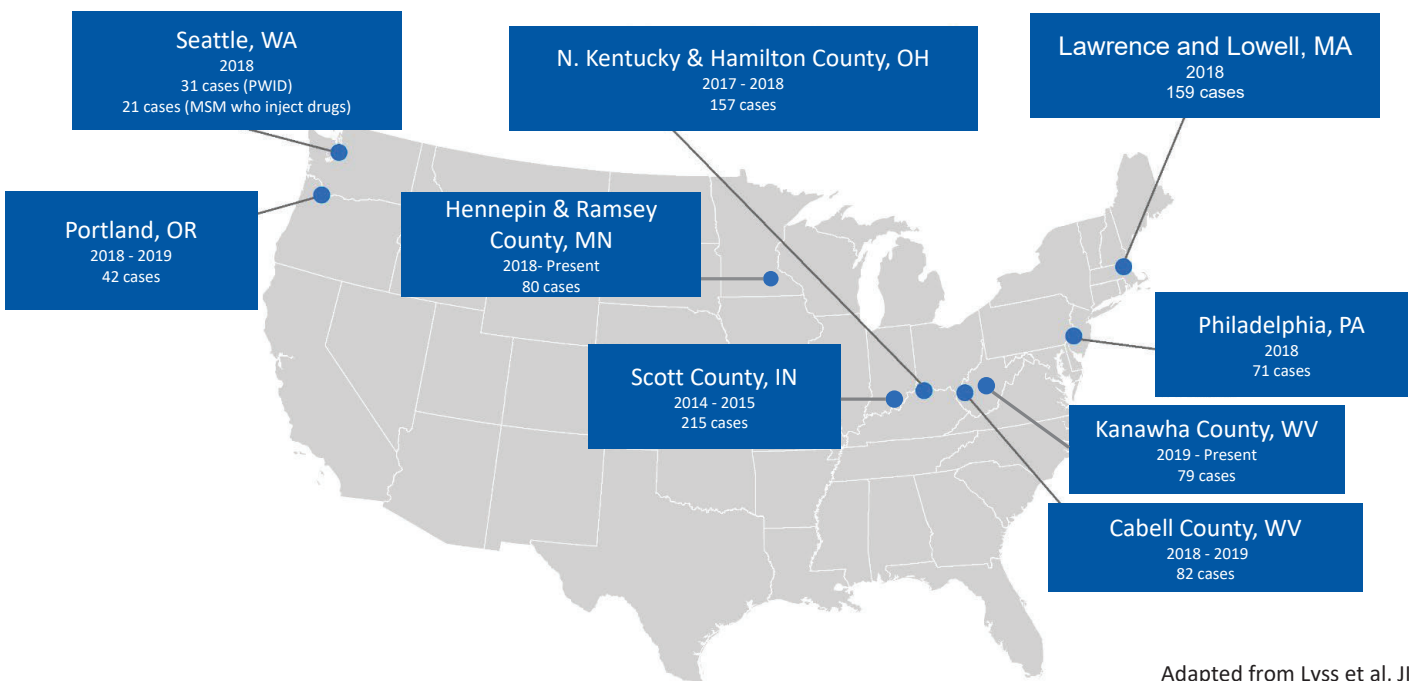


HIV Outbreaks Among People Who Inject Drugs: Recent CDC Experience

LCDR R. Paul McClung, MD
Division of HIV Prevention, CDC
November 4, 2021

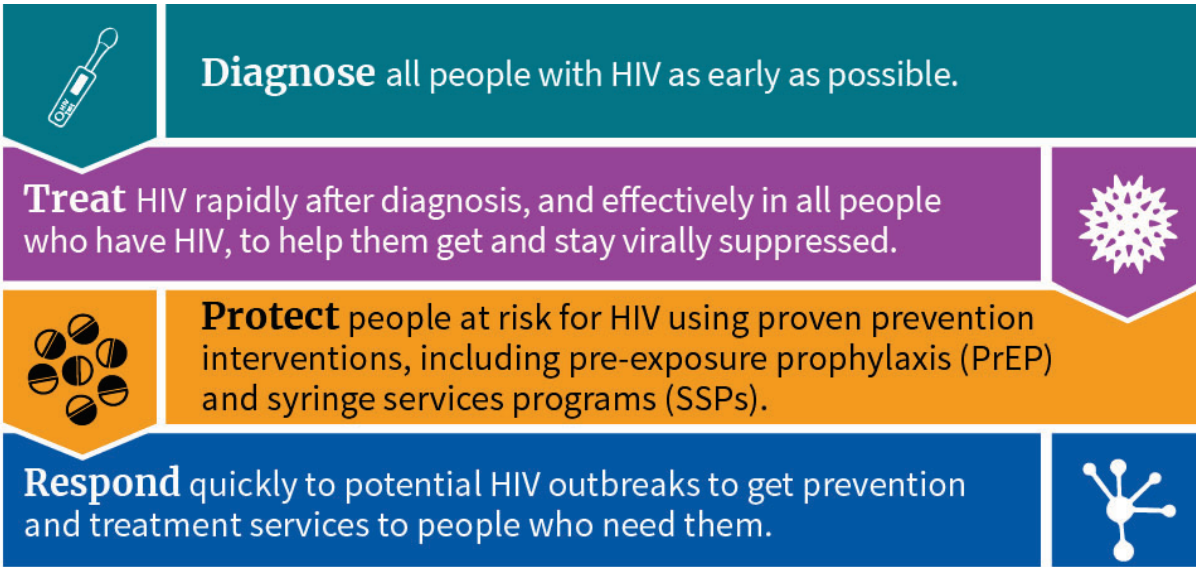


Recent HIV Outbreaks among People Who Inject Drugs



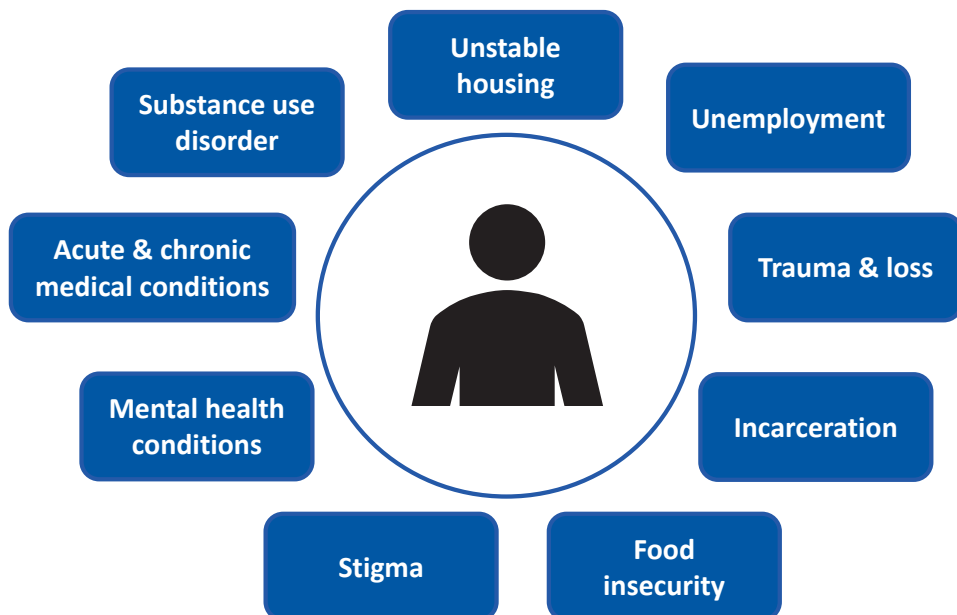
Adapted from Lyss et al, JID 2020

Ending the HIV Epidemic in the U.S.



Ending
the
HIV
Epidemic

PWID have complex medical and social service needs



Insights from recent HIV outbreak response experiences



Health departments: Limited staff capacity and siloed programs



Community engagement essential for planning and implementation



Must address services for people with HIV and those at risk for HIV



Need to “bend” our services to meet people where they are



Policy barriers can limit the reach of needed services

CDC provides support for HIV outbreak response

- **Funding for U.S. health departments to plan and conduct detection and response activities**
 - Includes capacity-building assistance
- **Technical assistance or surge support for specific outbreaks**
- **Coordination with other federal agencies**



HIV outbreaks & housing: improvements needed

1. Improved partnerships at the federal, state, and local level
2. Uses of data related to housing and HIV outcomes
3. Creative approaches to delivering integrated services

Housing services are essential to addressing HIV outbreaks

and

Lasting changes help to prevent future outbreaks

Thank you!

For more information, contact CDC
1-800-CDC-INFO (232-4636)
TTY: 1-888-232-6348 www.cdc.gov

The findings and conclusions in this report are those of the authors and do not necessarily represent the official position of the Centers for Disease Control and Prevention.

